



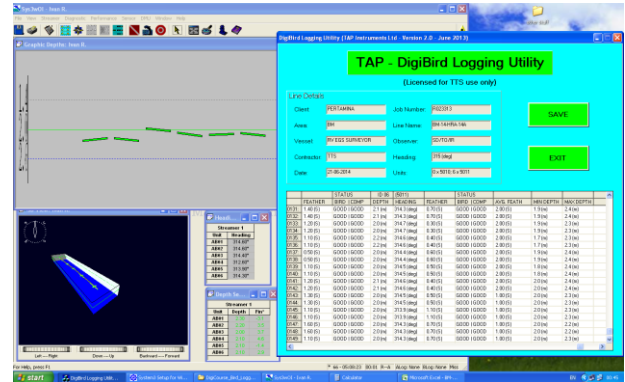
Equipment Specifications

For further information: Email: ttsoffice@aol.com
www.ttsurveys.com

Digicourse System 3 Positioning Control System

Overview

System 3 is a hardware and software package that controls and collects data from a network of acoustic sensors and streamer positioning devices. System 3 has on-line command, diagnostic, and performance-monitoring capabilities. The hardware is composed of three main components: a **Data Management Unit (DMU)**, an **Operator Interface (OI)** computer, a **Line Interface Unit (LIU)**. System 3 is operated through the operational software on OI computer running windows XP or above.



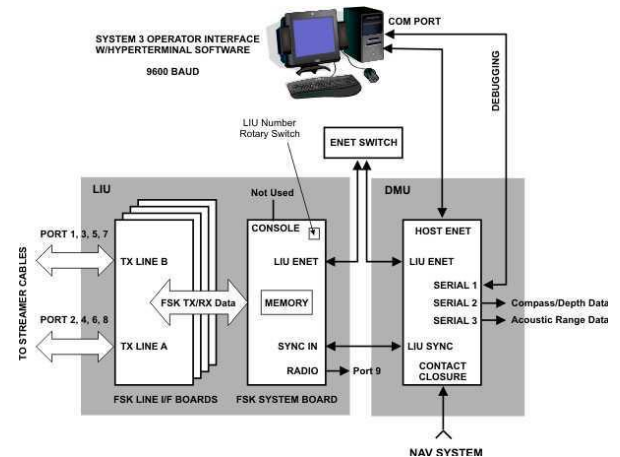
Data Management Unit (DMU)

Physical Characteristics:

Width: 48.09 cm (18.95 in)
Depth: 65.25 cm (25.69 in)
Height: 8.8 cm (3.47 in)

Electrical Characteristics:

Input Voltage: 100–240 Vac
Input Current: 6–3 A
Input Frequency: 60–50 Hz
Input Power: 300 W (max)
Fuse Rating: 6.3 A 250 V
Output Voltages: + 3.3 Vdc @ 20A, +5 Vdc @ 35A, - 5 Vdc @ 0.5A +12 Vdc @ 16A -12 Vdc @ 1.0A
Input Voltage, Current, and Frequency is 110 V, 6A, 60 Hz or 240 V, 3A, 50 Hz.
Operating temperature: 0o to 40o C;
Storage temperature: -20o to 65o C.



Line Interface Unit (LIU)

Physical Characteristics:

Width: 48.26 cm (19.00 in)
Depth: 28.88 cm (11.4 in)
Height: 13.26 cm (5.219 in)

Electrical Characteristics:

Input Voltage: 100–240 Vac
Input Current: 10–5A
Input Frequency: 60/50 Hz
Output Power: 300 W (max)
Output Voltages: + 3.3 Vdc @ 28 A +5 Vdc @ 30 A +12 Vdc @ 15 A -12 Vdc @ 0.8 A
Input Voltage, Current, and Frequency is 110 V, 10A, 60 Hz or 240 V, 5A, 50 Hz

