

Sercel Watergun

Overview

The Sercel Watergun is a pneumatic seismic source using compressed air similar to air guns. The watergun can also be interfaced with the same peripheral equipment as an Air gun. The watergun is an implosive source creating an acoustic pulse which is:

- free of bubble oscillations;
- has a broad spectrum extending to the high frequency (up to 2,500 Hz);
- is highly repeatable both in shape and amplitude.

The Sercel watergun is a versatile source that can be used offshore, in marsh areas, on land or for downhole shooting, both as a stand-alone source or in array.



FAR FIELD SIGNATURE AND SPECTRUM

Specifications

Operating Pressure: from 140 psi (10 bars) to 3,000 psi (210 bars)

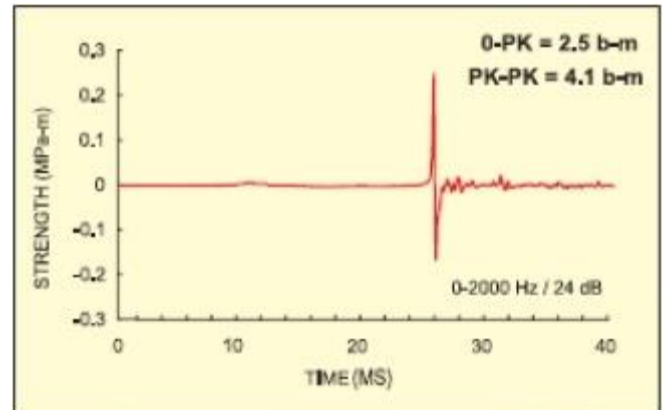
Air Requirement : 10 in³ (0.16 liter) per shot

Firing Cycle : 0.5 s (0.25 s upon request)

Compressor Requirement: 50 scfm (87 Nm³/h)
(2,000 psi/s)

Minimum firing depths: Horizontal 9 in. (0.22 m)
Vertical 1 ft. (0.30 m)

Maximum firing depth: 1,800 ft. (600 m)



Triggering

Solenoid Voltage Required: 40-60v (DC)

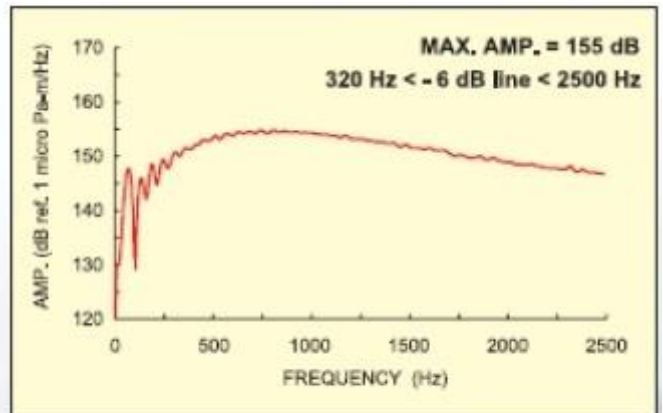
Dimensions and Weight

Length: 460mm

Width: 120mm

Height: 120mm

Weight: 13 Kg



1 * S15 Watergun
Pressure = 2,000 psi
Depth = 0.22 m